

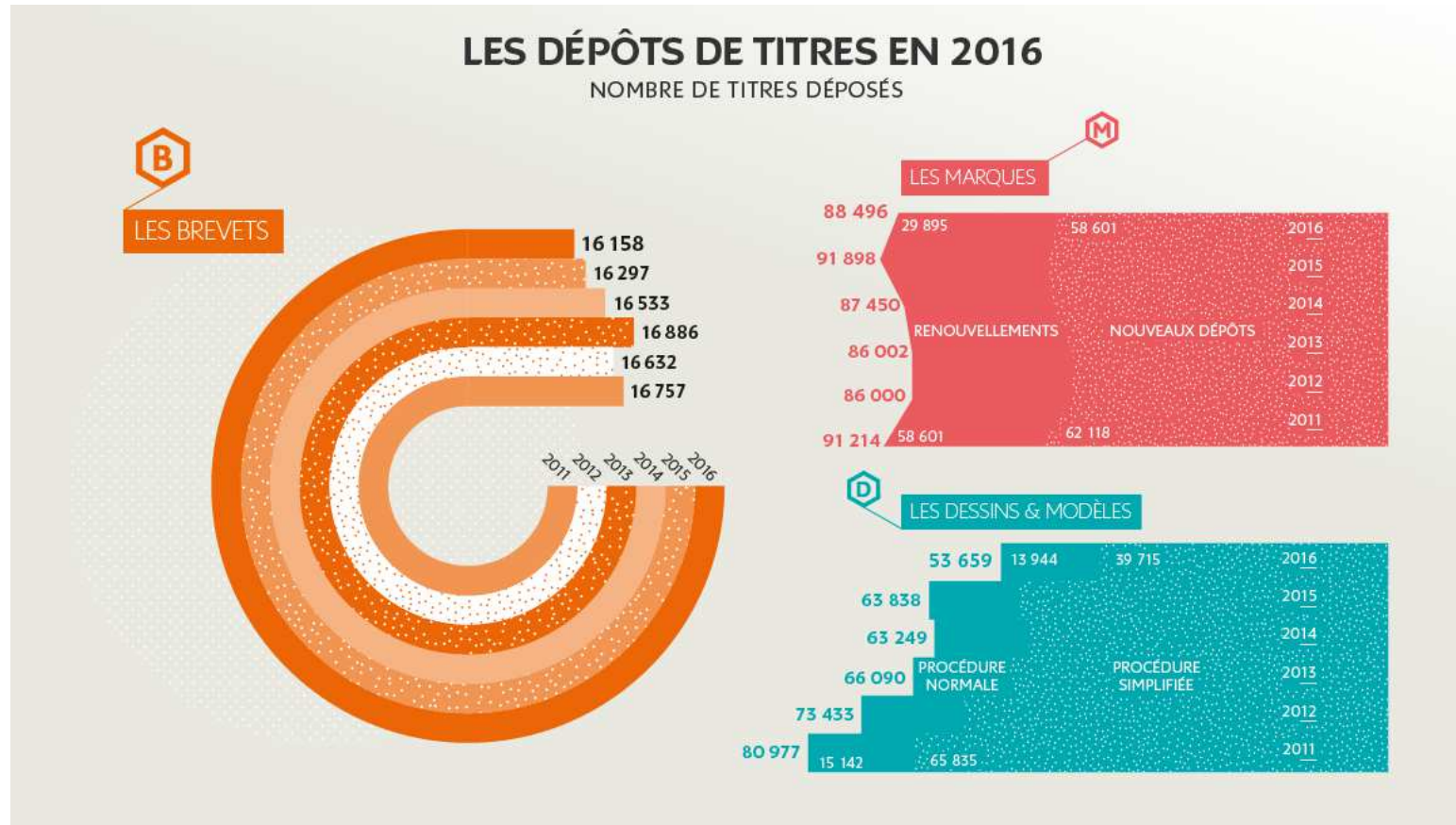
What role for national IP offices in Europe in the global patent system ?

Laurence JOLY

EPIP 2017

Bordeaux, 4/09/2017

Institut National de la Propriété Industrielle



INPI is the national intellectual property office of France, in charge of patents, trademarks and industrial design rights

The Observatory for Intellectual Property

The Observatory for Intellectual Property, part of INPI, is a centre of expertise, analysis and reflection for all economic and strategic issues relating to intellectual property.

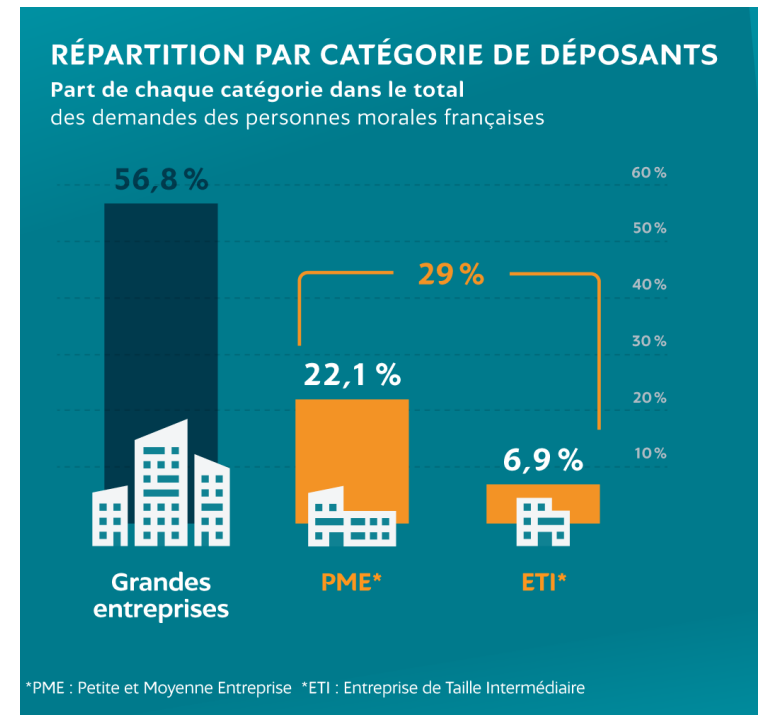
Its task is to analyse the INPI's legal, economic and strategic environment and provide useful insight into intellectual property issues for both the INPI and economic and political decision-makers

Patent applications in France

16 218 patent application in 2016

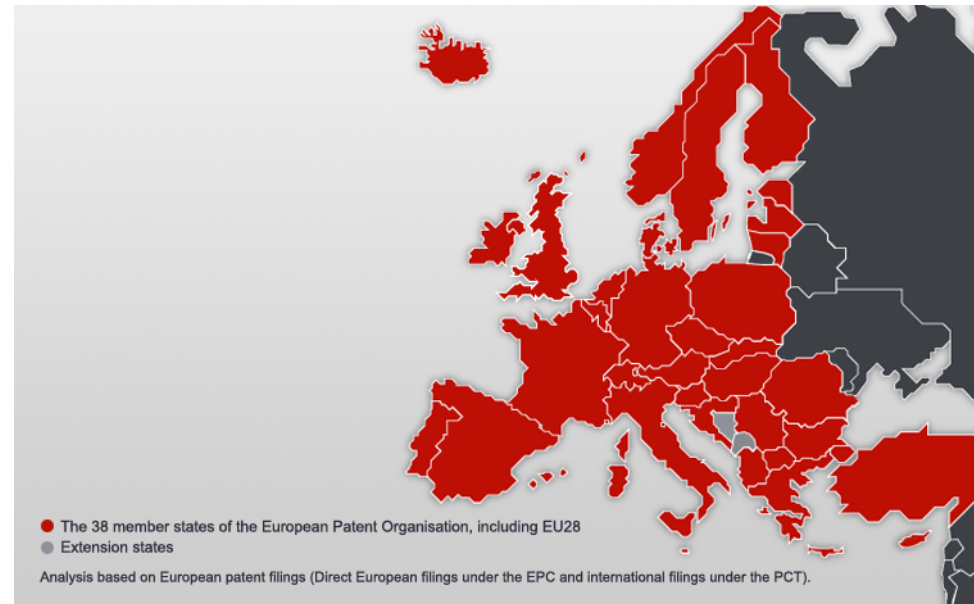
Who are the applicants ?

- 12 280 french legal entities
- 1 926 french individuals
- 1 847 foreign legal entities
- 165 foreign individuals



Source : INPI

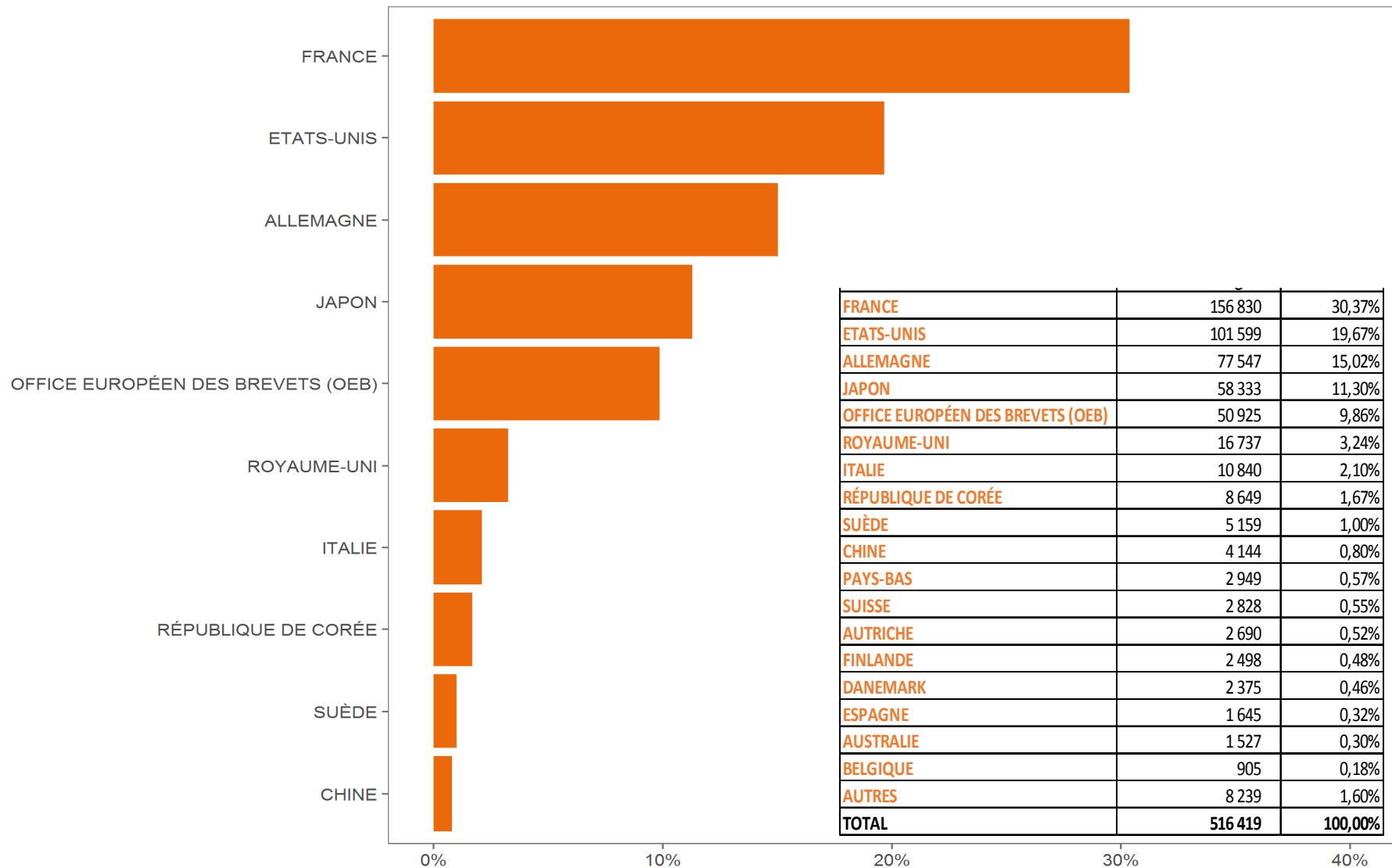
How the patent system is working in Europe in 2017 ?



2 way to have a patent in force in France :

- National applications to INPI (direct or under priority from national offices)
- Applications to EPO (direct or under priority from PCT or national offices) – becoming national patent after granting

516 419 Patent in force in France (by filing offices)



Life of french patents filed in 1999 by french legal entities

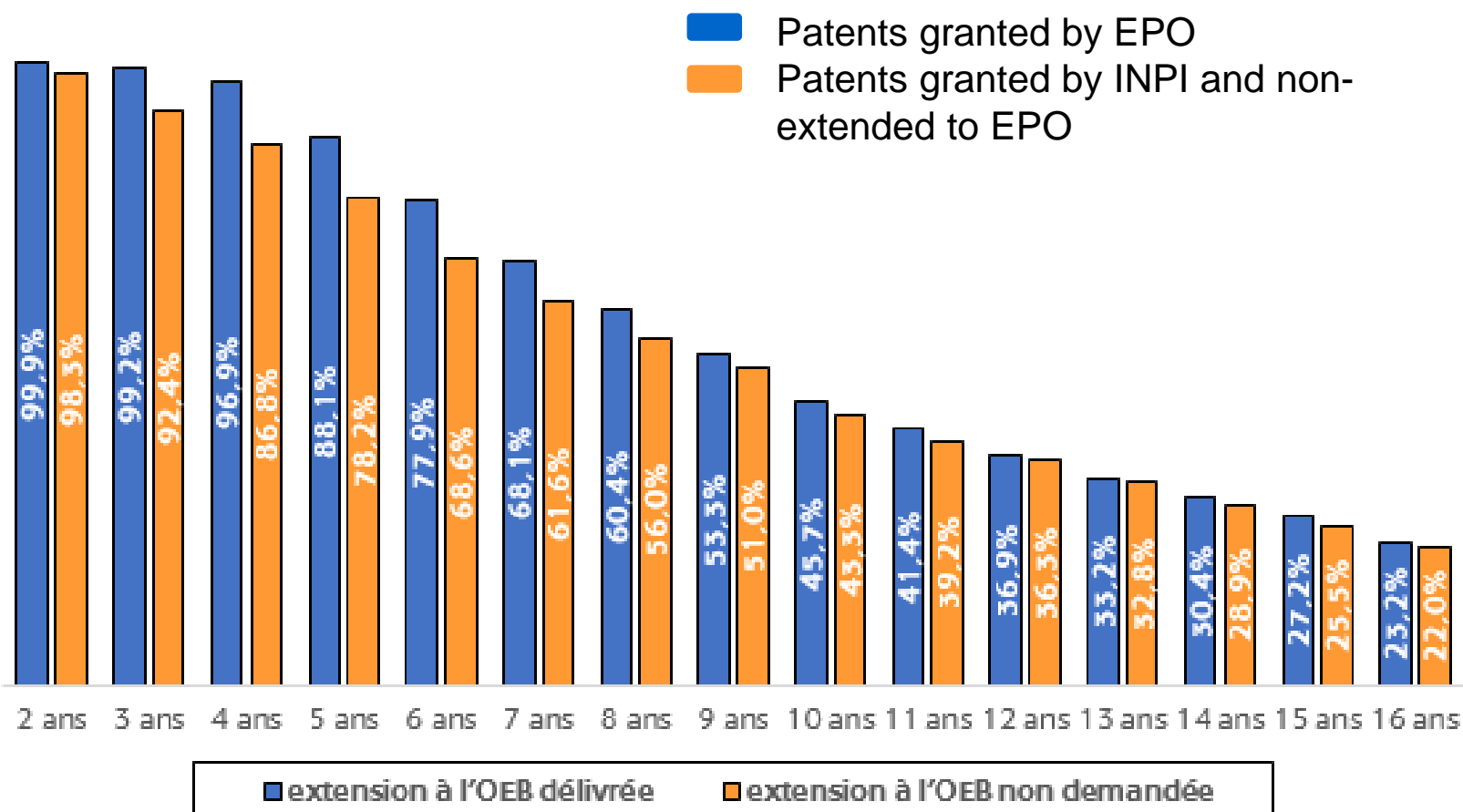
10 237 patent filed in 1999 at INPI from french legal entities (60,7% of 16 868)



9 451 published by INPI (92%)
8 521 granted by INPI (83%)

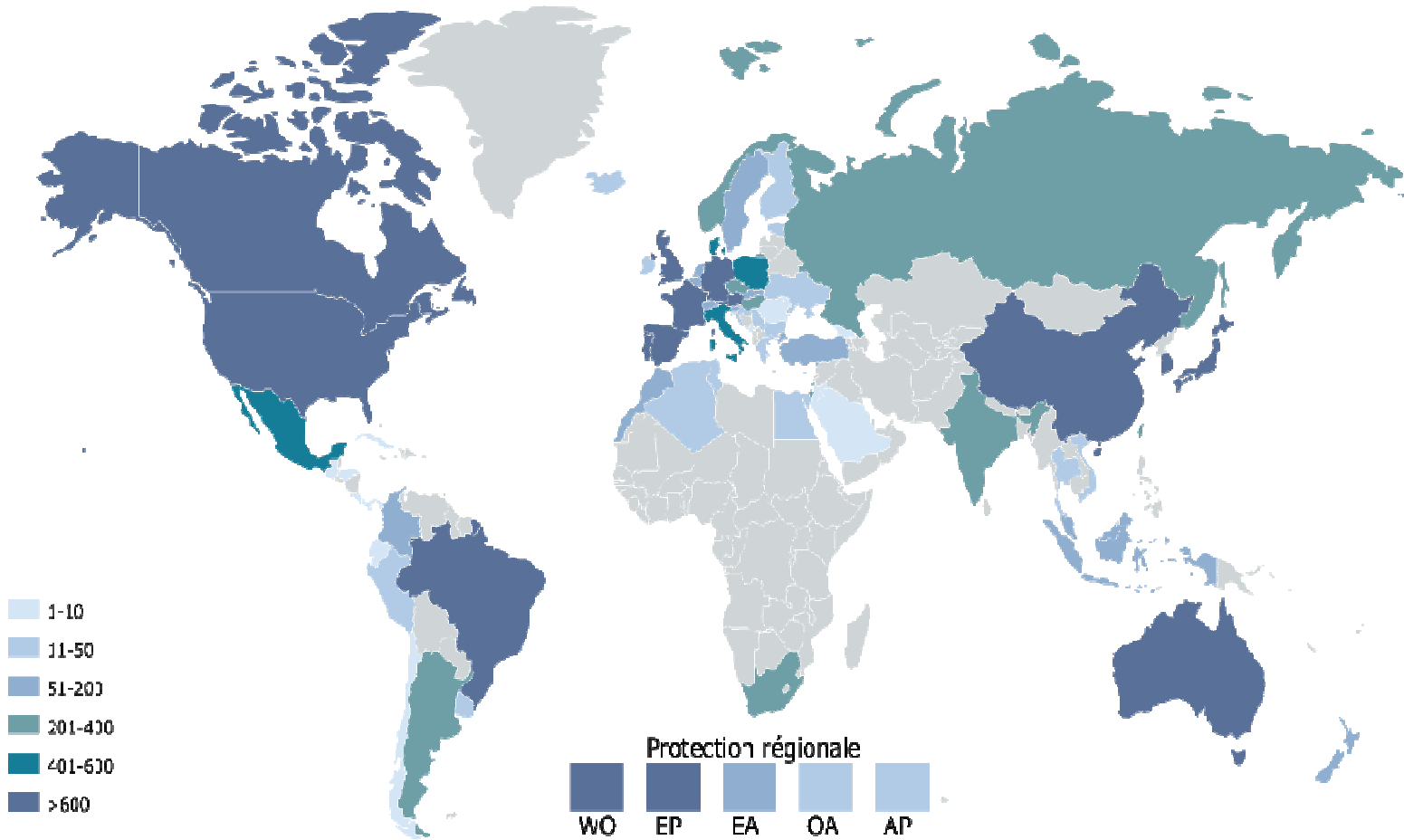
5 127 extended to EPO (53%)
3 519 granted by EPO (69%)

Evolution of patent in force (with and without EPO) – patent filed in 1999 at INPI



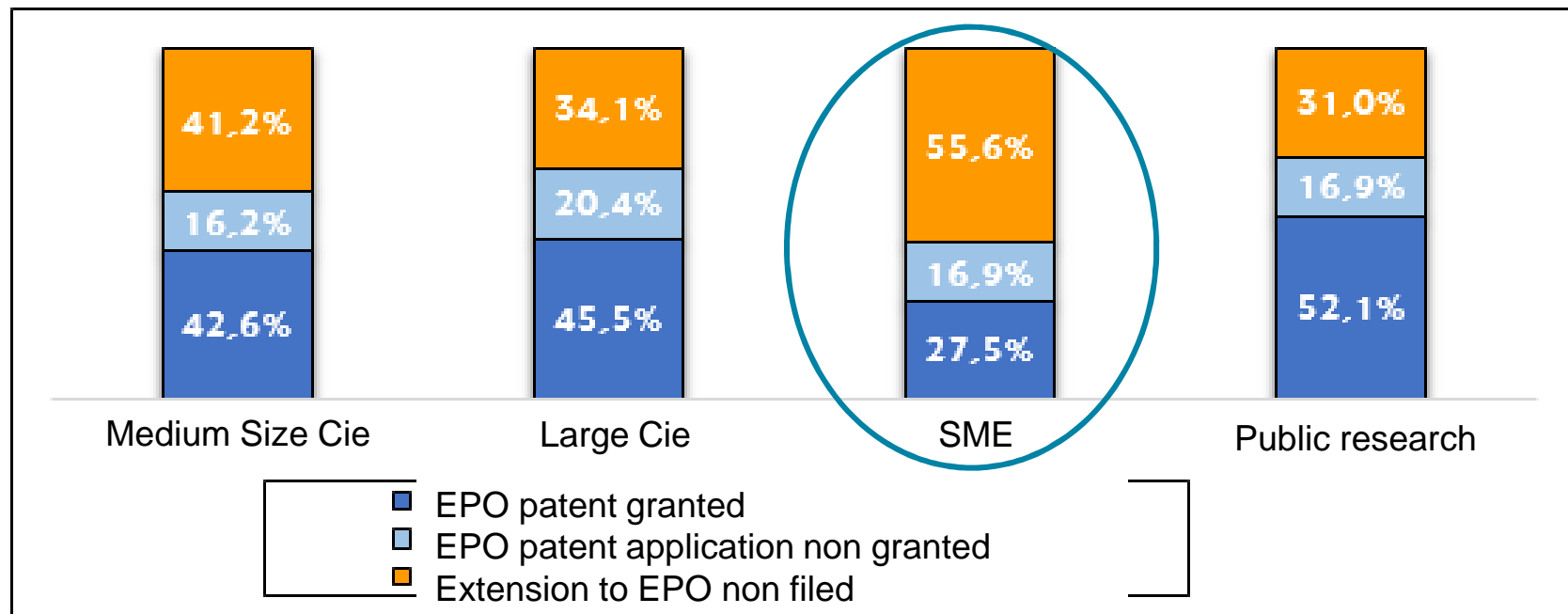
Source : INPI ; Traitement : INPI / OPI ; juillet 2017

International extension of french patents filed in 1999 by french legal entities



Extension and grant of french patent by type of applicant

Répartition des brevets délivrés ayant été déposés en 1999 à l'INPI par les personnes morales françaises selon les demandes d'extension à l'OEB



Source : INPI ; Traitement : INPI / OPI ; juillet 2017

Awareness policy towards companies

